

MITEL NETWORKS

3300 | Integrated Communications Platform



Robust, Scalable **Voice-over-IP**
for the Enterprise

Robust, Scalable **Voice-over-IP**

for the ENTERPRISE

Advanced Voice Services, Flexible Networking

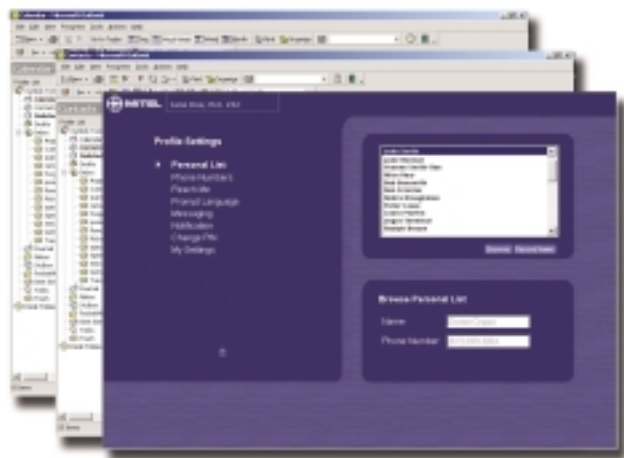
The Mitel Networks™ 3300 Integrated Communications Platform (ICP) supports full-featured IP voice call control for users and devices, providing voice communications services and features equal or superior to today's most advanced PBX telephone systems. The Mitel Networks 3300 ICP supports both IP Networking and traditional networks (analog trunks and digital trunks – T1/D4, MSDN/DPNSS, E1, R2, DASSII, Q.SIG, PRI, BRI) for connection to the PSTN and for connecting multiple sites or systems together.

Network Multiple Sites

Multiple 3300 ICPs can be clustered or networked between multiple sites over IP or traditional TDM infrastructure to support up to 40,000 users – either on a private or public voice network which delivers services over the PSTN or via the LAN or WAN. In addition, the Mitel Networks 3340 Branch Office Solution seamlessly extends head office functionality to the branch office.

Integrated Enterprise Applications

The 3300 ICP can include an optional range of fully integrated, embedded Mitel Networks enterprise applications, including voice mail and ACD. Other optional applications include speech-enabled auto attendant, PDA and PC-based application integration, unified messaging and emerging Voice XML, contact center and Customer Relationship Management (CRM) applications.



Integrated Enterprise Applications

Web-Based System and User Management

Integrated, browser-based management tools enable system administrators to easily manage 3300 ICP controllers, applications, and network users/devices from any web-connected PC. Individual users also benefit from intuitive, web-based tools that allow them to access, manage, and program system services and their personal desktop IP devices quickly and easily from their desktop.



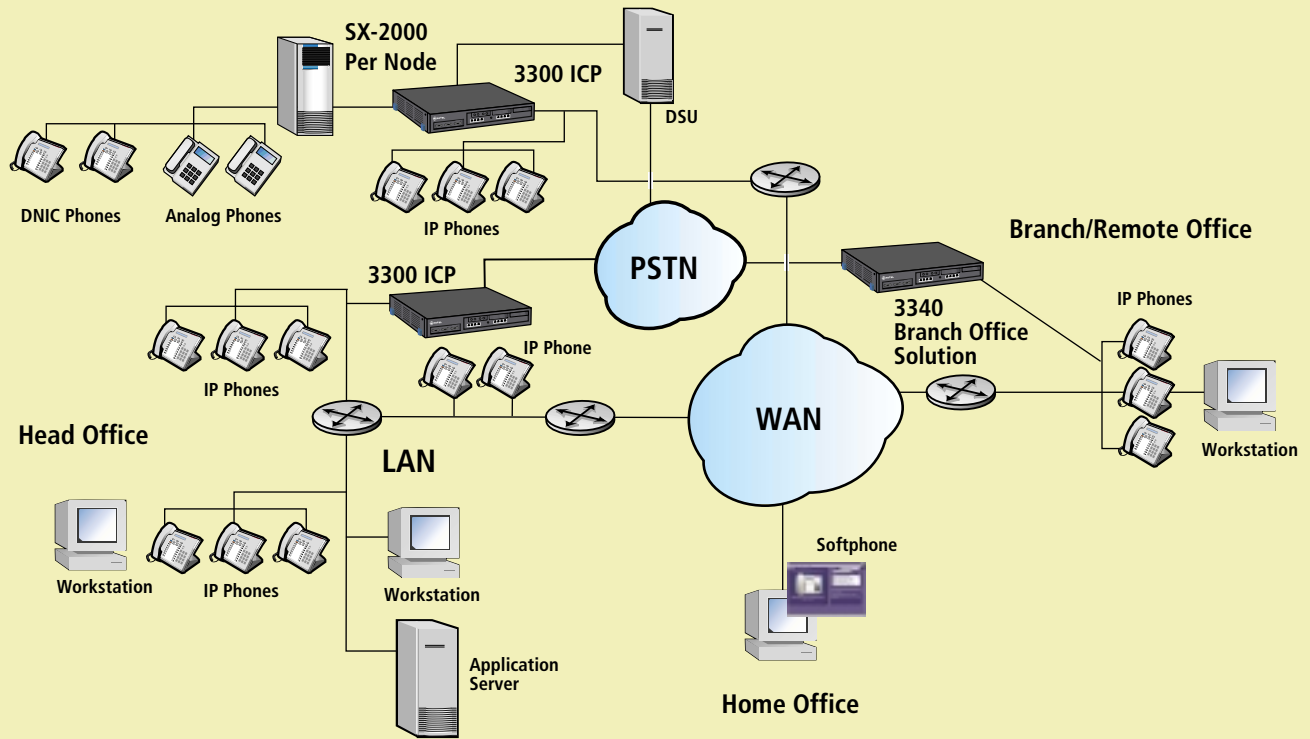
Intuitive on-screen interface allows users to quickly and easily set preferences and programming for their Mitel Networks Desktop Devices.

Enterprise Network or VoIP Adjunct

Thanks to its support for both IP and conventional circuit-switching, the 3300 ICP can be deployed as an enterprise-wide network or as an adjunct to an existing voice infrastructure providing packetized voice services to a branch office, workgroup or department.

Converged Network

The Mitel Networks 3300 ICP supports feature-rich, reliable voice communications over any IP-based LAN or WAN supporting QoS (802.1p and 802.1q at the switch level and ToS support (Dif Serv) at the router level).



Flexible Range of Desktop Devices

Mitel Networks IP phones and PC-based desktop applications support superior voice quality and easy user access to 3300 ICP voice services and applications. These range from low-cost, single-port IP phones to advanced, web-enabled appliances, PC-based Softphone applications, IP conferencing units, and advanced attendant console applications.

Mitel Networks Data Integrated Voice Applications Architecture

The Mitel Networks 3300 ICP is based on the Mitel Networks Data Integrated Voice Applications™ architecture: a switched IP core that is highly scalable and delivers reliable, robust switching, routing and call control plus support for the traditional circuit-switched environment. This unique approach fully leverages the power of IP while recognizing the need to support traditional circuit-switching infrastructure and existing analog and digital telephones moving forward.

it's about **YOU**

Companies don't make decisions, people do. Which is why Mitel Networks is leading the way toward a new, more personalized approach to enterprise and small business communications. Our innovative solutions, applications, and desktop appliances enable you to access, process, and control your communications and information naturally, simply, and efficiently. To collaborate over distance and time. And to interact with your customers, colleagues, and partners as never before. All by combining the power of voice, data, and video over converged high-speed networks. And by providing you with flexible, personalized tools that let you leverage the latest advances for personal and organizational advantage.

www.mitel.com

1-800-648-3579

Mitel Networks

350 Legget Drive
Ottawa, Ontario
K2K 2W7 Canada
(613) 592-2122

Mitel Networks, Inc.

205 Van Buren Street
Suite 400
Herndon, VA
20170-5336 USA
(703) 318-7020

Mitel Networks Ltd.

Mitel Business Park
Portskewett, Caldicot
NP26 5YR UK
Sales: 0870 9093030
General: 0870 9092020
Int: +44 (0) 1291 430 000

THIS DOCUMENT IS PROVIDED TO YOU FOR INFORMATIONAL PURPOSES ONLY. The information furnished in this document, believed by Mitel to be accurate as of the date of its publication, is subject to change without notice. Mitel assumes no responsibility for any errors or omissions in this document and shall have no obligation to you as a result of having made this document available to you or based upon the information it contains.

M MITEL (design) is a registered trademark of Mitel Networks Corporation. All other products and services are the registered trademarks of their respective holders.

© Copyright 2002, Mitel Networks Corporation. All Rights Reserved. GD 5350

PN 51002787, Rev D

